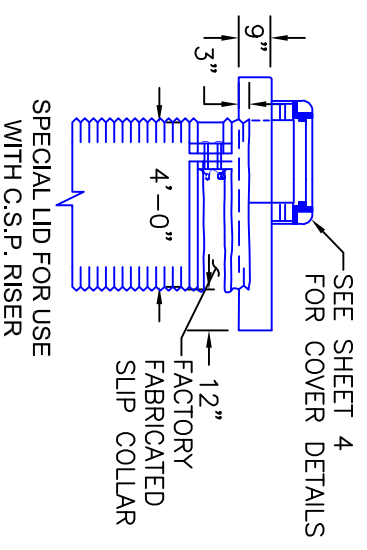
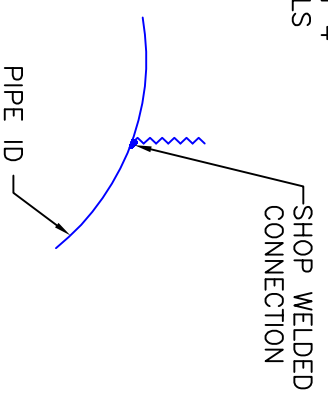
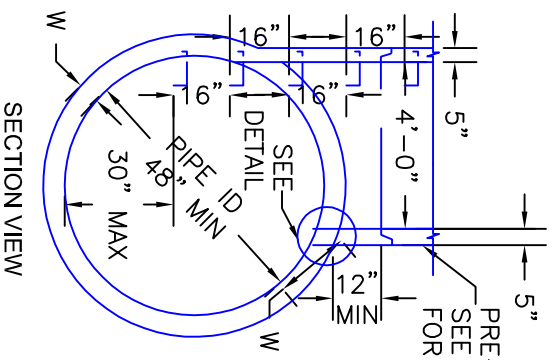


NOTE

TYPE III MANHOLES SHALL BE USED WHEN APPROPRIATE AND TYPICALLY WHEN THE FOLLOWING CONDITIONS ARE MET:

- A. PIPE IS 48" OR LARGER INSIDE DIAMETER.
 - B. NOT CHANGE IN PIPE SIZE
 - C. NO CHANGE IN PIPE MATERIAL
 - D. NO CHANGE IN HORIZONTAL ALIGNMENT
 - E. SLOPE IS FLAT AND CONTINUOUS
2. TYPE III MANHOLES SHALL BE FABRICATED BY THE MANUFACTURER/SUPPLIER AND DELIVERED TO THE SITE AS A SINGLE UNIT. FIELD FABRICATION SHALL NOT BE PERMITTED.
3. EITHER LADDER OR STEPS SHALL BE INSTALLED. LOWEST STEP SHALL BE A MAXIMUM OF 30" ABOVE THE INVERT OF THE PIPE.



DRAFT

SCALE: NOT TO SCALE

Storm Sewer Manhole Detail
Type III

Standard Drawing

DATE APPROVED:

REVISION DATE:

11/10/04

FILE NAME:

SD_3-3

DEPARTMENT OF TRANSPORTATION

