

DRAFT

DATE APPROVED:

DEPARTMENT OF TRANSPORTATION

Storm Sewer Manhole Detail

Type 1

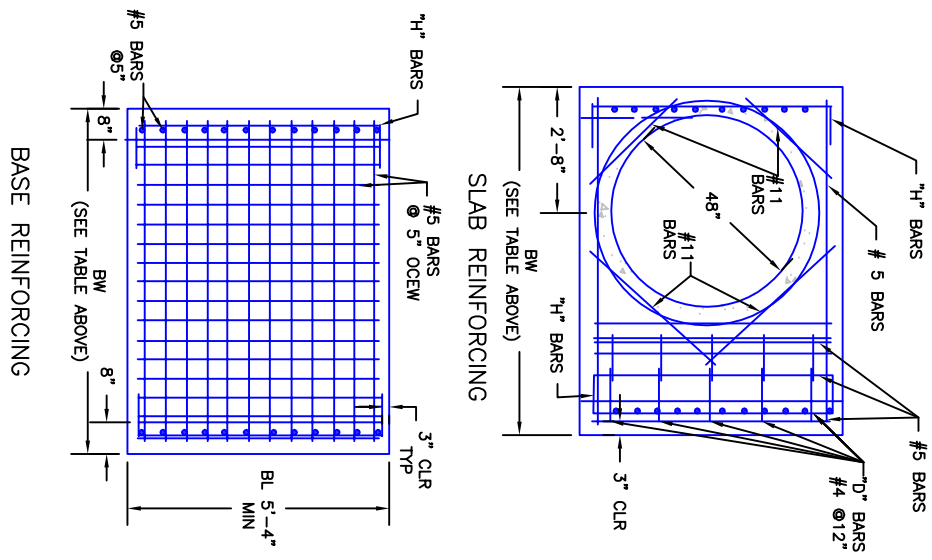
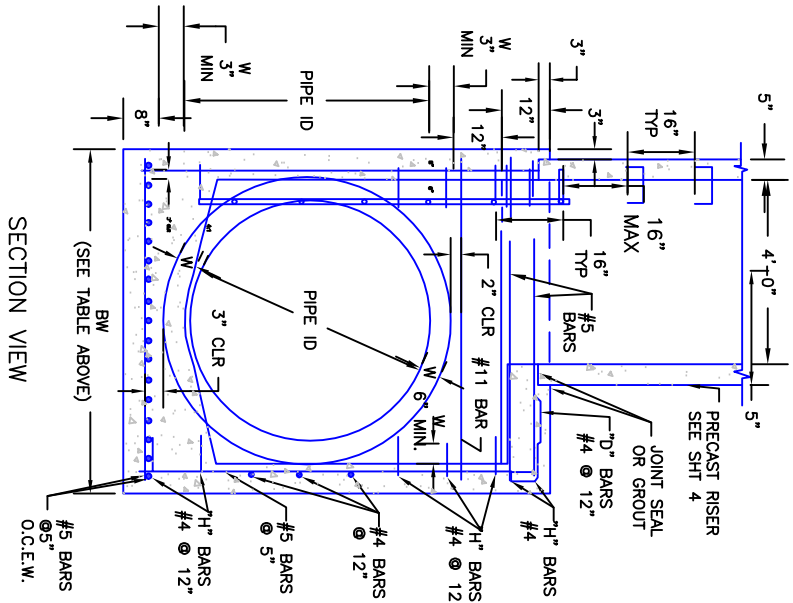
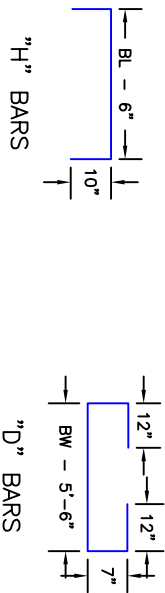
Standard Drawing

REVISION DATE:

11/10/04

FILE NAME:

SD_3-1



PIPE ID	BW
48" AND SMALLER	6'-4"
54"	6'-10"
60" AND LARGER	OD + 16"

NOTES

1. TYPE 1 MANHOLE SHALL BE USED IN WHEN APPROPRIATE AND TYPICALLY FOR PIPE SIZES LESS THAN 30 INCHES.
2. VIEW AND DETAILS SHOWN ARE TYPICAL FOR STRAIGHT THROUGH DESIGN ONLY. DESIGN ENGINEER SHALL DETERMINE MANHOLE BASE CONFIGURATION AND DIMENSIONS FOR PARTICULAR PIPE SIZES AND ALIGNMENT.
3. EITHER LADDER OR STEPS SHALL BE INSTALLED WHEN MANHOLE DEPTH EXCEEDS 30". LOWEST STEP SHALL BE A MAXIMUM OF 16" ABOVE THE FLOOR.
4. FLOOR OF THE MANHOLE SHALL BE TROWELLED TO A SMOOTH, HARD SURFACE AND SHALL SLOPE TOWARDS THE OUTLET (8:1 MAX., 1/2" PER FT. MIN). FLOOR SHALL BE SHAPED AND CHANNELLED; SEE SD_3-2 FOR TYPICAL CHANNEL DETAILS.

SCALE: NOT TO SCALE

